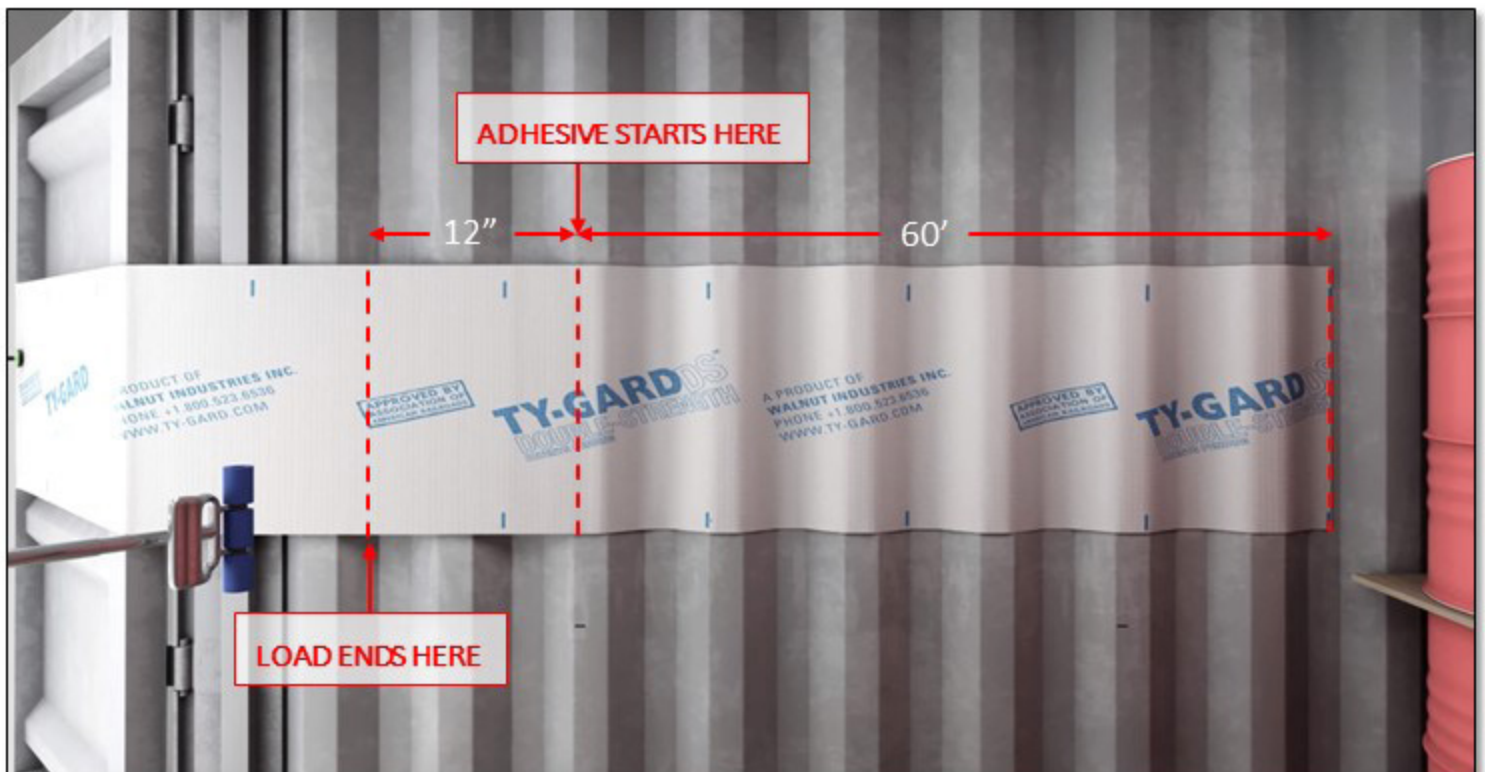
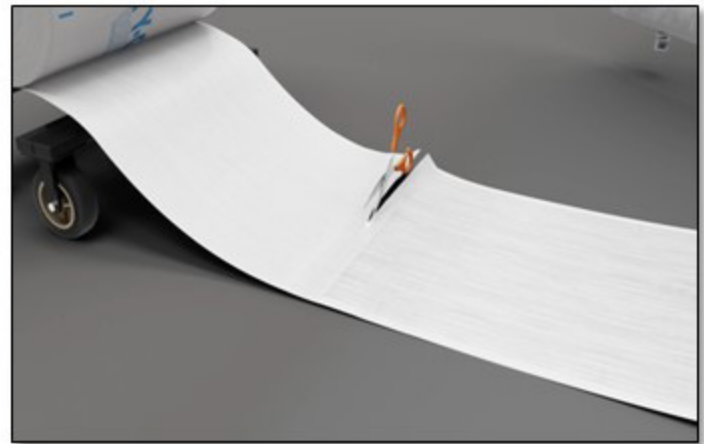


TY-GARD DS® INSTALLATION INSTRUCTIONS



1. PREPARE MATERIALS

CUT TWO 12' LENGTHS OF TY-GARD DS® AND ONE 5' LENGTH OF TY-PATCH DS® FOR EACH BARRIER REQUIRED.

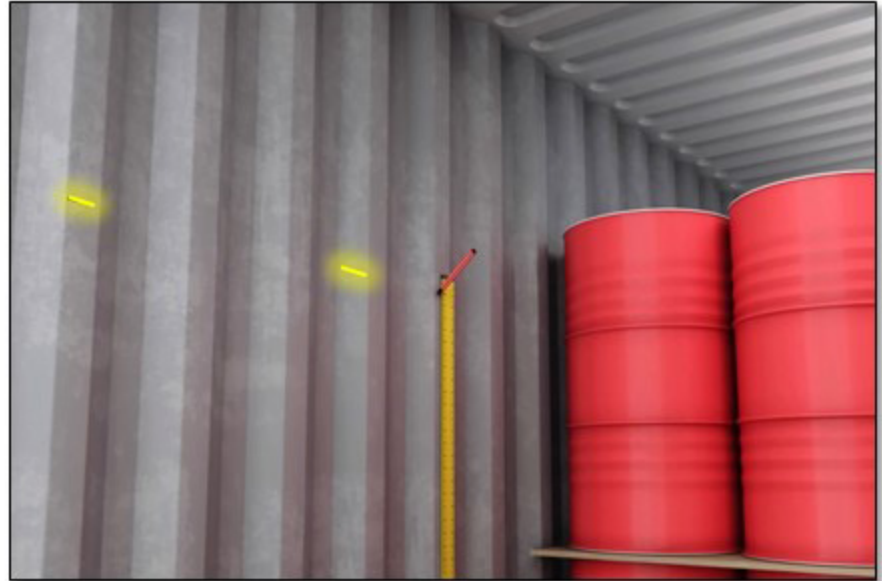


2. MARK CONTAINER SIDEWALLS

MARK THE CONTAINER SIDEWALL 1'-0" (MINIMUM) FROM THE END OF LOAD AT PREDETERMINED HEIGHTS.

* BE SURE TO PLACE BANDS ON OPPOSING SIDEWALLS AT THE SAME HEIGHT

* MARK WALLS FOR EACH BAND IN TWO LOCATIONS TO HELP ENSURE BANDS ARE PARALLEL

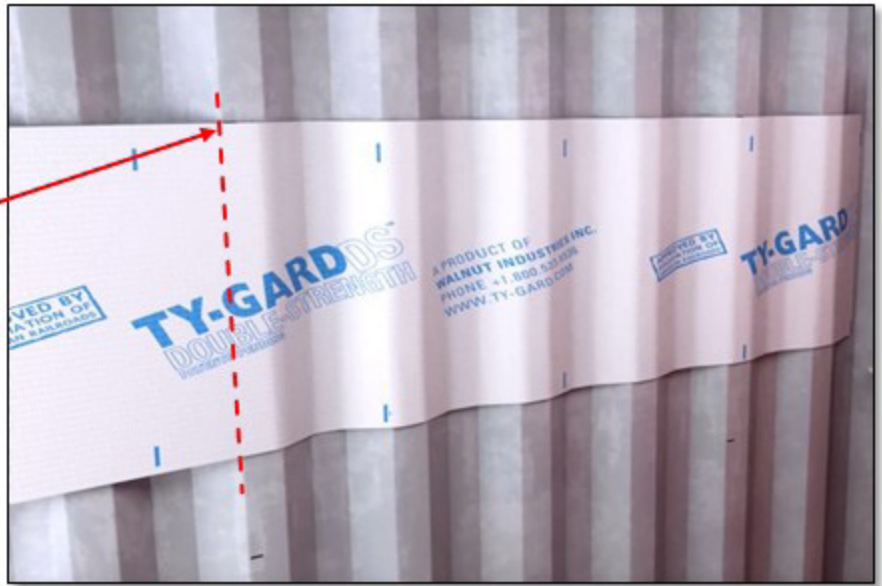


3. BOND TO SIDEWALL

ADHERE THE TY-GARD DS® TO THE SIDEWALL AT THE PRE-MAKED LOCATION. PEEL OFF THE RELEASE LINER AND FOLLOW THE CONTOUR OF THE CORRUGATIONS.



* START TY-GARD ADHESIVE ON TOP FLAT SECTION OF CORRUGATION.



4. APPLY PRESSURE

USING THE BONDING ROLLER OR SQUEEGEE AND PRESS FIRMLY TO THE WALL. FOLLOW THE SAME PROCEDURE FOR THE OPPOSITE SIDEWALL.



* TY-GARD ADHESIVE REQUIRES PRESSURE



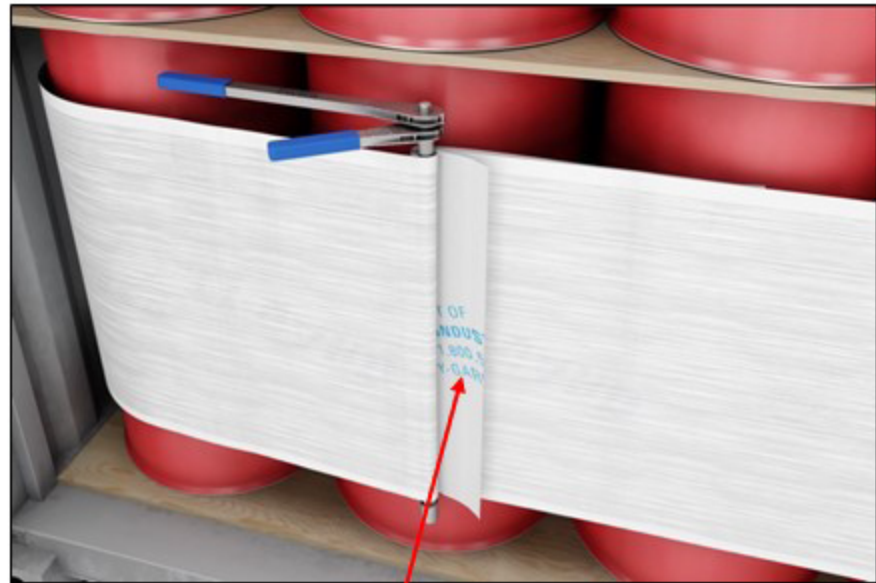
5. LOAD & WRAP

FINISH LOADING CARGO THEN PULL THE TY-GARD STRIPS ACROSS THE FACE OF THE LOAD OVERLAPPING ENDS APPROXIMATELY 6". CUT EXCESS IF NECESSARY.

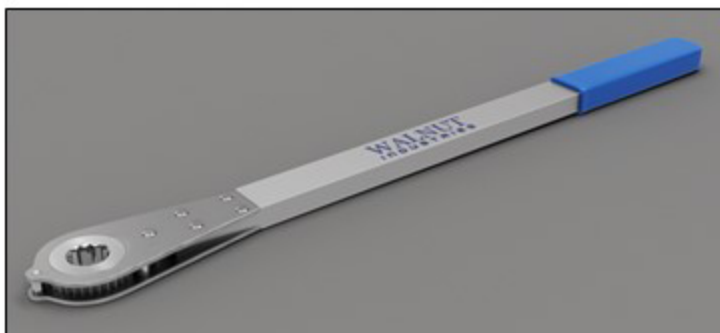


6. TENSION

NEXT SLIDE SLOTTED TENSIONER DOWN THROUGH THE OVERLAPPING PORTIONS OF TY-GARD. PLACE THE LONG WRENCH ON TOP AND PUSH THE HANDLE FLUSH AGAINST THE LOAD. ROTATE THE SMALL WRENCH BACK AND FORTH TO TENSION THE BANDS OF TY-GARD DS®.



* IF BANDS ARE SETBACK ON SIDEWALL CORRECTLY OVERLAP SHOULD BE NO MORE THAN 6"



7. APPLY TY-PATCH

REMOVE BACKING SHEET AND PLACE THE 5' LENGTH OF TY-PATCH ACROSS TENSIONED TY-GARD BARRIER.

*AGAIN USE THE BONDING ROLLER OR SQUEEGEE TO CURE BOND.

PLACE VERTICAL STRIPS OF TY-TAPE ACROSS BANDS OF TY-GARD DS



TY-GARD DS® INSTALLATION TRAINING MOVIE